

MONITORING OF PUBLIC OPINION

DOI: 10.15838/esc.2024.3.93.16

The Monitoring of Public Opinion on the State of the Russian Society

As in the previous issues, we publish the results of the monitoring of public opinion concerning the state of the Russian society. The monitoring is conducted by VoIRC RAS in the Vologda Region¹.

The following tables and graphs show the dynamics of several parameters of social well-being and socio-political sentiment of the region's population according to the results of the latest round of the monitoring (June 2024) and for the period from June 2023 to June 2024 (the last seven surveys, that is, almost a year).

We compare the results of the surveys with the average annual data for 2000 (the first year of Vladimir Putin's first presidential term), 2007 (the last year of Vladimir Putin's second presidential term, when the assessment of the President's work was the highest), 2011 (the last year of Dmitry Medvedev's presidency), and 2012 (the first year of Vladimir Putin's third presidential term).

We also present the annual dynamics of the data for 2018 and for 2020–2023².

In April – June 2024, the President's approval rating did not change significantly and amounts to 67–68%. The proportion of negative assessments is 20–21%, which is significantly lower in comparison with positive ones³.

Positive dynamics have been recorded over the past 12 months (from June 2023 to June 2024): the President's approval rating increased by 6 percentage points (from 61 to 67%)⁴.

¹ The surveys are held six times a year in the cities of Vologda and Cherepovets, in Babayevsky, Velikoustyugsky, Vozhegodsky, Gryazovetsky, Tarnogsky Kirillovsky, Nikolsky municipal okrugs, and in Sheksninsky Municipal District. The method of the survey is a questionnaire poll by place of residence of respondents. The volume of a sample population is 1,500 people 18 years of age and older. The sample is purposeful and quoted. The representativeness of the sample is ensured by the observance of the proportions between the urban and rural population, the proportions between the inhabitants of settlements of various types (rural communities, small and medium-sized cities), age and sex structure of the Region's adult population. Sampling error does not exceed 3%.

More information on the results of VoIRC RAS surveys is available at <http://www.vsc.ac.ru/>.

² In 2020, four rounds of the monitoring were conducted. Surveys in April and June 2020 were not conducted due to quarantine restrictions during the spread of COVID-19.

³ Here and elsewhere, in all tables and in the text, positive changes are highlighted in green, negative changes are highlighted in red, and no changes – in blue. Due to the fact that the changes of +/- 3 p.p. fall within the limits of sampling error, they are considered insignificant and are marked in blue.

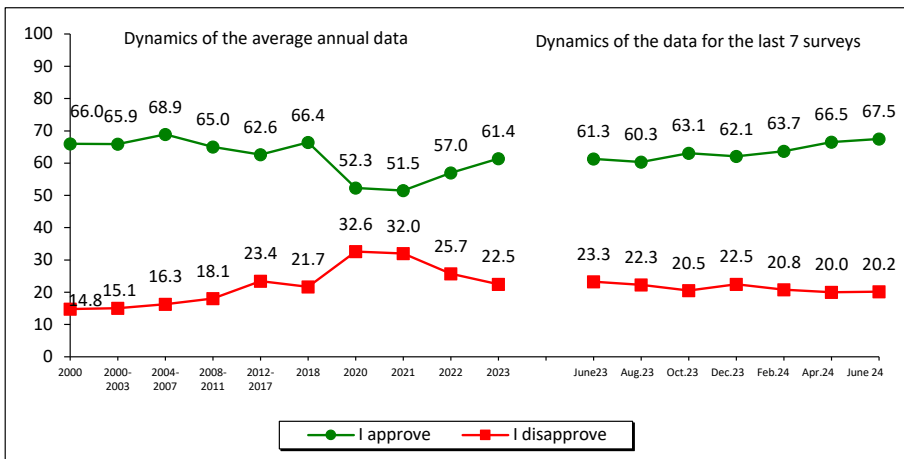
⁴ Here and elsewhere in the text, the results of a comparative analysis of the data from the survey conducted in June 2024 and the results of the monitoring round conducted in June 2023 are given in the frame.

How would you assess the current work of...? (% of respondents)

Response	Dynamics of the average annual data										Dynamics of the data for the last 7 surveys							Dynamics (+/-), June 2024 to	
	2000	2007	2011	2012	2018	2020	2021	2022	2023	June 2023	Aug. 2023	Oct. 2023	Dec. 2023	Feb. 2024	Anp. 2024	June 2024	June 2023	Anp. 2024	
RF President																			
I approve	66.0	75.3	58.7	51.7	66.4	52.3	51.5	57.0	61.4	61.3	60.3	63.1	62.1	63.7	66.5	67.5	+6	+1	
I disapprove	14.8	11.5	25.5	32.6	21.7	32.6	32.0	25.7	22.5	23.3	22.3	20.5	22.5	20.8	20.0	20.2	-3	0	
Chairman of the RF Government																			
I approve	-	-	59.3	49.6	48.0	38.7	39.9	45.4	50.1	49.2	50.8	51.3	51.9	52.7	53.7	53.5	+4	0	
I disapprove	-	-	24.7	33.3	31.6	40.4	37.6	32.0	27.6	27.1	26.1	28.6	27.9	26.2	24.3	23.4	-4	-1	
Vologda Region Governor																			
I approve	56.1	55.8	45.7	41.9	38.4	35.0	36.7	40.9	48.1	48.7	48.1	47.5	49.1	50.8	51.7	51.6	+3	0	
I disapprove	19.3	22.2	30.5	33.3	37.6	42.5	40.5	35.8	30.9	30.7	29.7	29.7	29.9	27.5	30.1	28.0	-3	-2	

Wording of the question: "How would you assess the current work of ...?"

How would you assess the way that the RF President is handling his job? (% of respondents, VolRC RAS data)*



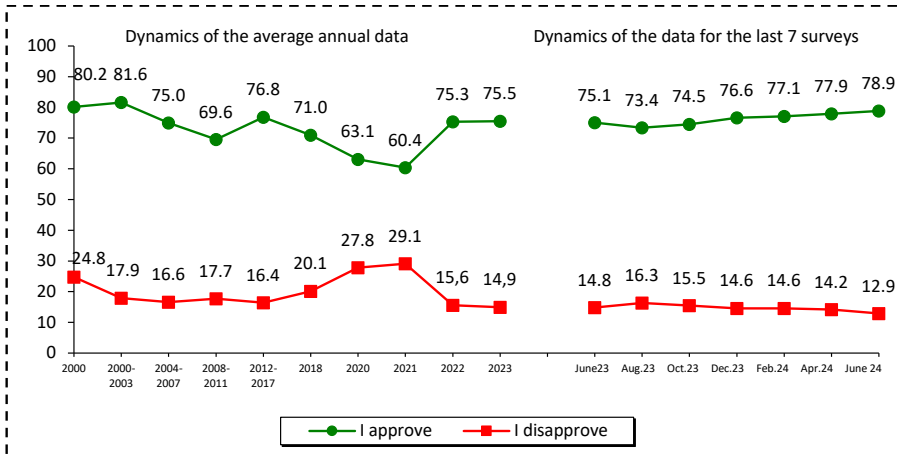
* Here and elsewhere, all graphs show the average annual data for 2000, 2018, 2020, 2021, 2022, 2023, as well as the average annual data for the periods 2000–2003, 2004–2007, 2008–2011, 2012–2017 that correspond to presidential terms.

For reference:

According to VCIOM, the President’s approval rating for the period from April 2024 to the beginning of June 2024 has not changed and amounts to 78–79%. The proportion of those who disapprove of the way the President is handling his job is significantly lower (13%).

A positive trend in the President’s approval rating was recorded in June 2024 compared to the same period in 2023: the share of approving responses increased by 4 percentage points (from 75 to 79%).

Do you approve or disapprove of the way that the RF President is handling his job?
(% of respondents; VCIOM data)



Dynamics (+/-), June 2024 to		
Response	June 2023	Apr. 2024
I approve	+4	+1
I disapprove	-2	-1

Wording of the question: “In general, do you approve or disapprove of the way that the Russian President is handling his job?”

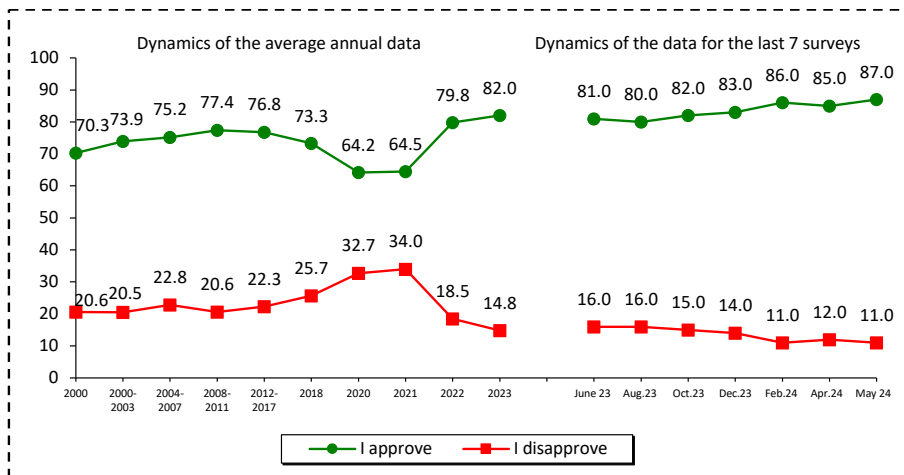
Data as of June 2024 reflect an average for three surveys: June 2, 2024, June 9, 2024 and June 16, 2024.

Source: VCIOM. Available at: <https://wciom.ru/>

According to *Levada-Center**, the President’s approval rating for April – May 2023 has not change significantly: the share of those who approve of the way that the head of state is handling his job is 85–87%. The proportion of negative assessments is 11–12%.

Compared with June 2023, the President’s approval rating in May 2024 increased by 6 percentage points, from 81 to 87%.

In general, do you approve or disapprove of the way that Vladimir Putin is handling his job as President of Russia? (% of respondents; Levada-Center* data)



Dynamics (+/-), May 2024 to		
Response	June 2023	Apr. 2024
I approve	+6	+2
I disapprove	-5	-1

Wording of the question: “In general, do you approve or disapprove of the way that Vladimir Putin is handling his job as President of Russia?”

Source: Levada-Center*. Available at: <https://www.levada.ru/>

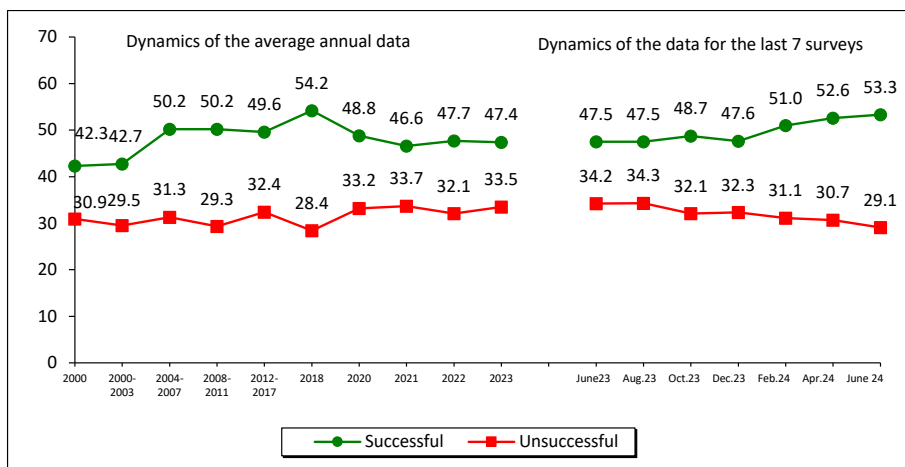
* Included in the register of foreign agents.

In April – June 2024, the share of the region’s residents who consider the President’s actions to strengthen Russia’s international positions successful was 53%. The proportion of those who hold the opposite point of view is significantly lower (29%).

Compared to June 2023, in June 2024, the share of positive assessments increased by 6 percentage points (from 47 to 53%); the proportion of negative ones decreased by 5 percentage points (from 34 to 29%).

In your opinion, how successful is the RF President in handling challenging issues?
(% of respondents; VoIRC RAS data)

Strengthening Russia’s international position

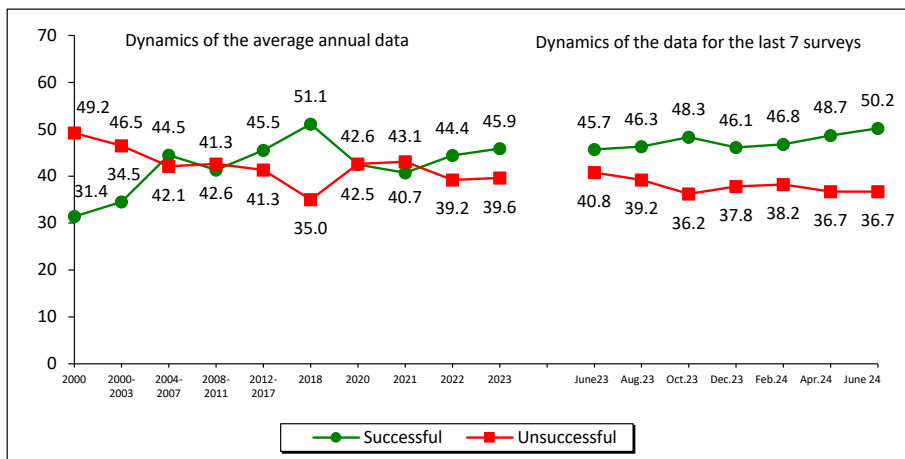


Dynamics (+/-), June 2024 to		
Response	June 2023	Apr. 2024
Successful	+6	+1
Unsuccessful	-5	-2

Over the past two months, the share of positive judgments about the RF President’s work to restore order in the country has not changed and amounts to 49–50%. The share of negative judgments is 37%.

Over the past 12 months, we observe a positive trend: an increase in the proportion of those who approve of the work of the head of state to restore order in the country, from 46 to 50%. The share of negative ratings decreased by 4 percentage points (from 41 to 37%).

Imposing order in the country

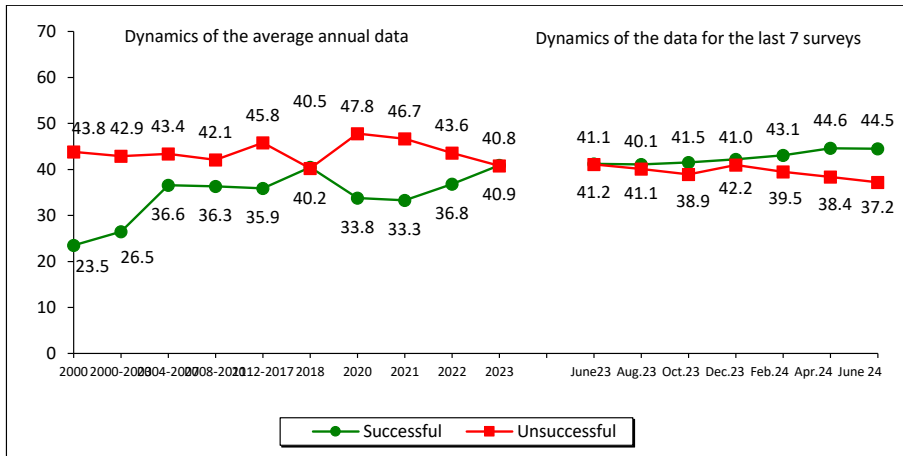


Dynamics (+/-), June 2024 to		
Response	June 2023	Apr. 2024
Successful	+5	+2
Unsuccessful	-4	0

In April – June 2024, the share of Vologda Region residents who consider the President’s work to protect democracy and strengthen citizens’ freedoms successful amounted to 44–45%. The proportion of those who adhere to the opposite point of view is 38–40%.

In June 2024, the population’s estimates were slightly better than in June 2023 (the share of positive assessments increased by 3 percentage points, from 41 to 44%). The share of negative judgments decreased by 4 percentage points (from 41 to 37%).

Protecting democracy and strengthening citizens’ freedoms

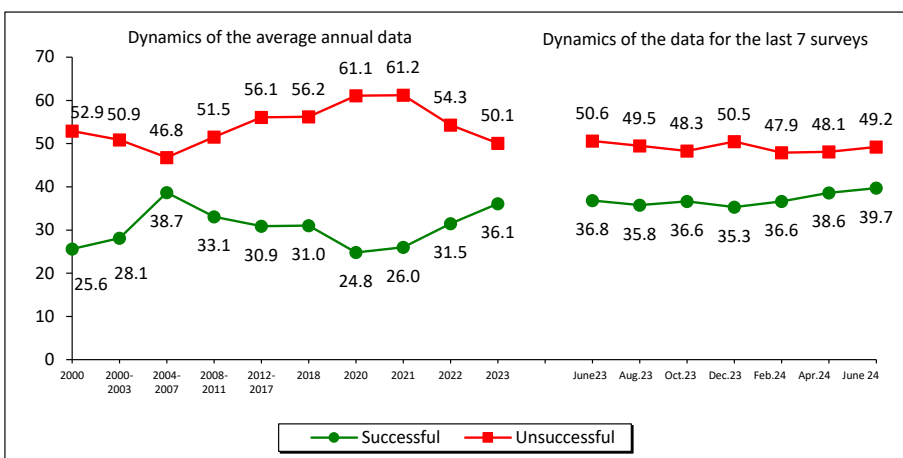


Response	June 2023	Apr. 2024
Successful	+3	0
Unsuccessful	-4	-1

In April – June 2024, the share of positive assessments of the way the Russian President handles the problem of economic recovery and growth of citizens’ welfare did not change and amounted to 39–40%.

In annual dynamics (June 2023 – June 2024), population estimates improved slightly: the proportion of residents who noted the success of the RF President’s work in handling economic issues increased by 3 percentage points (from 37 to 40%).

Economic recovery, increase in citizens' welfare



Response	June 2023	Apr. 2024
Successful	+3	+1
Unsuccessful	-1	+1

The political preferences of Vologda Region inhabitants remained stable in April – June 2024. The share of people whose interests are expressed by the United Russia party was 44%, the Communist Party – 8%, the Liberal Democratic Party – 7%, the Just Russia – 2%, the New People – 2%

In the period from June 2023 to June 2024, the level of public support for the United Russia party increased (from 39% to 44%). The share of supporters of other parties remained unchanged.

Which party expresses your interests? (% of respondents; VoIRC RAS data)

Party	Dynamics of the average annual data													Dynamics of the data for the last 7 surveys							Dynamics (+/-), June 2024 to	
	2000	2007	2011	Election to the RF State Duma 2011, fact	2012	2016	Election to the RF State Duma 2016, fact	2018	2020	Election to the RF State Duma 2020, fact	2021	2022	2023	June 2023	Aug. 2023	Oct. 2023	Dec. 2023	Feb. 2024	Apr. 2024	Июнь 2024	June 2023	Apr. 2024
United Russia	18.5	30.2	31.1	33.4	29.1	35.4	38.0	37.9	31.5	49.8	31.7	35.2	39.5	39.3	39.0	40.3	41.7	42.7	44.5	43.7	+4	-1
KPRF	11.5	7.0	10.3	16.8	10.6	8.3	14.2	9.2	8.4	18.9	9.3	10.1	9.6	9.5	9.8	9.8	9.8	9.0	8.5	8.2	-1	0
LDPR	4.8	7.5	7.8	15.4	7.8	10.4	21.9	9.6	9.5	7.6	9.9	7.3	7.0	6.7	7.8	7.9	6.5	6.6	6.5	7.1	0	+1
Just Russia – Patriots for the Truth	-	7.8	5.6	27.2	6.6	4.2	10.8	2.9	4.7	7.5	4.7	4.9	4.4	4.7	4.5	4.5	3.5	3.6	2.8	2.7	-2	0
New People*	-	-	-	-	-	-	-	-	-	5.3	2.3	1.5	1.9	2.1	2.3	1.5	1.9	1.4	1.9	2.3	0	0
Other	0.9	1.8	1.9	-	2.1	0.3	-	0.7	0.5	-	0.2	0.3	0.1	0.0	0.2	0.0	0.3	0.1	0.1	0.1	0	0
None	29.6	17.8	29.4	-	31.3	29.4	-	28.5	34.2	-	33.9	30.6	26.5	26.5	25.2	24.6	26.6	25.2	24.2	26.1	0	+2
Difficult to answer	20.3	21.2	13.2	-	11.7	12.0	-	11.2	11.1	-	10.0	10.1	11.1	11.4	11.2	11.4	9.9	11.4	11.4	9.8	-2	-2

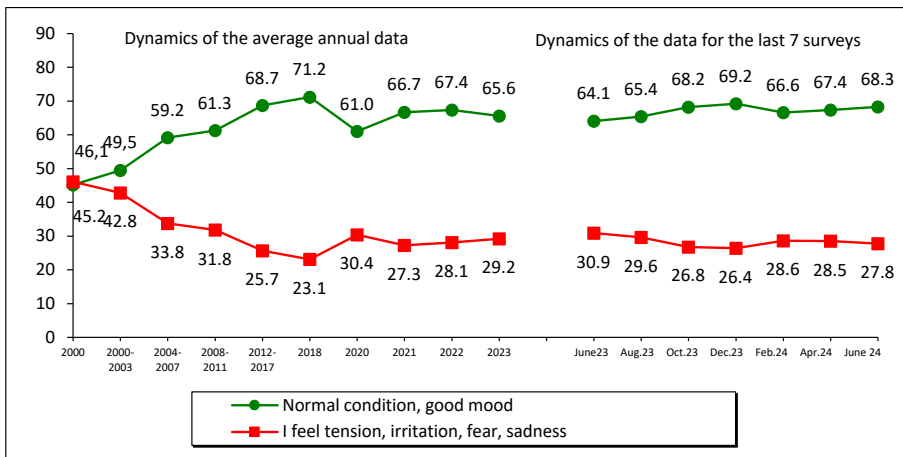
* The New People party was elected to the State Duma of the Russian Federation for the first time following the results of the election held on September 17–19, 2021.

Estimation of social condition (% of respondents; VoIRC RAS data)

Over the past two months, the share of positive assessments of social mood has amounted to 67–68%; the share of negative characteristics was 27–28%.

Over the past 12 months, the proportion of people describing their mood as “normal, fine” increased by 4 percentage points (from 64 to 68%). The proportion of those who more often feel “tension, irritation, fear, sadness” decreased by 3 percentage points (from 31 to 28%).

Social mood

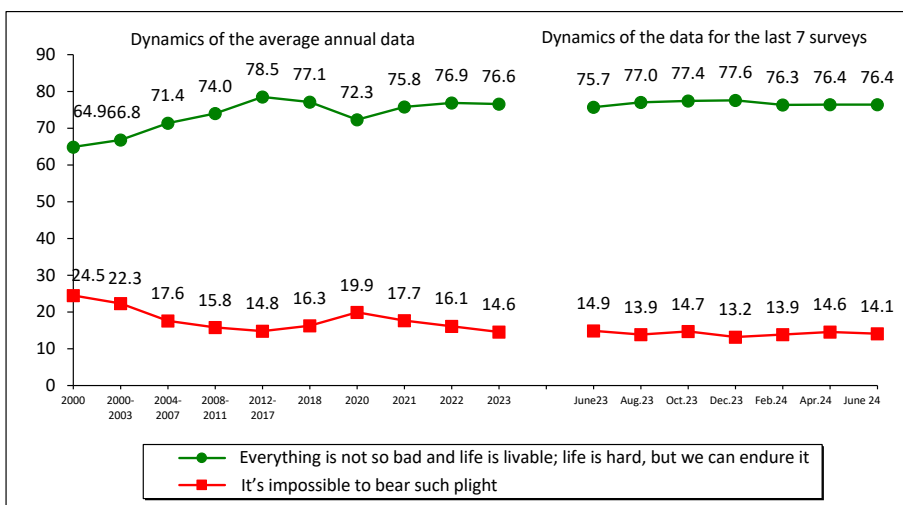


Dynamics (+/-), June 2024 to		
Response	June 2023	Apr. 2024
Normal condition, good mood	+4	+1
I feel tension, irritation, fear, sadness	-3	-1

The stock patience remains consistently high: in April, 76% of the region’s residents pointed out that “everything is not so bad and life is livable” The proportion of those who believe that “it is impossible to bear such plight” was 14–15%.

Similar estimates of the stock of patience of the region’s residents were observed in June 2023.

Stock of patience

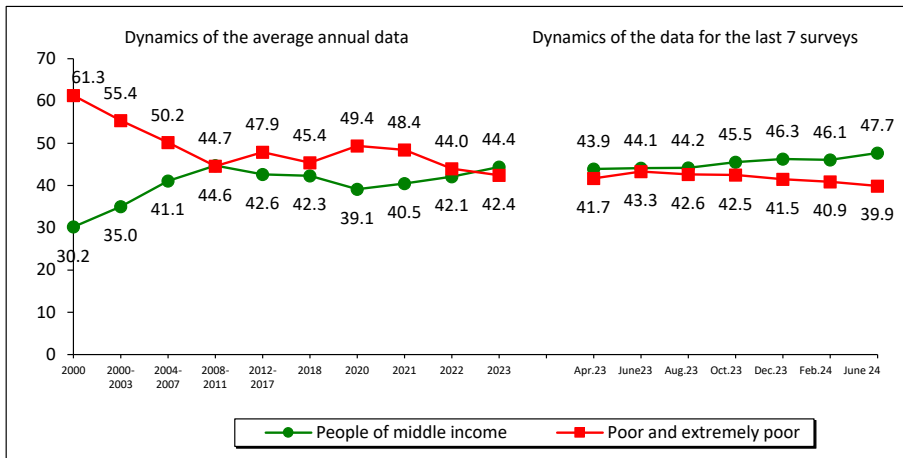


Dynamics (+/-), June 2024 to		
Response	June 2023	Apr. 2024
Everything is not so bad and life is livable; life is hard, but we can endure it	+1	0
It's impossible to bear such plight	-1	-1

In June 2024, like in April, the share of Vologda Region residents who consider themselves people of “average income” was 46–48%. The proportion of the “poor and extremely poor” did not change (40%).

Over the past 12 months, the share of “middle-income” people has increased by 4 percentage points (from 44 to 48%). The proportion of those who consider themselves poor and extremely poor did not change.

Social self-identification*



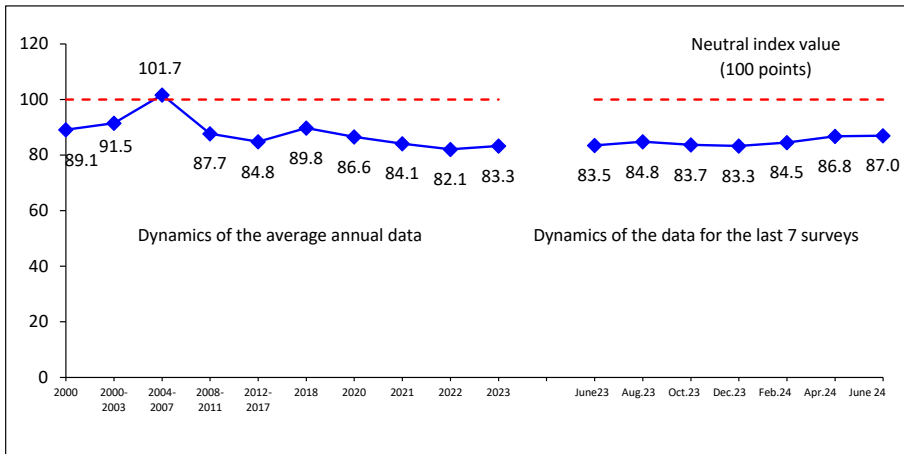
Response	June 2023	Apr. 2024
People of average income	+4	+2
Poor and extremely poor	-2	-1

* Wording of the question: “What category do you belong to, in your opinion?”

The Consumer Sentiment Index (CSI) in April – June 2024 amounted to 87 points.

The CSI shows positive dynamics compared to June 2023: the index increased by 4 percentage points (from 83 to 87 points).

Consumer Sentiment Index
(CSI, points; VoIRC RAS data for the Vologda Region)



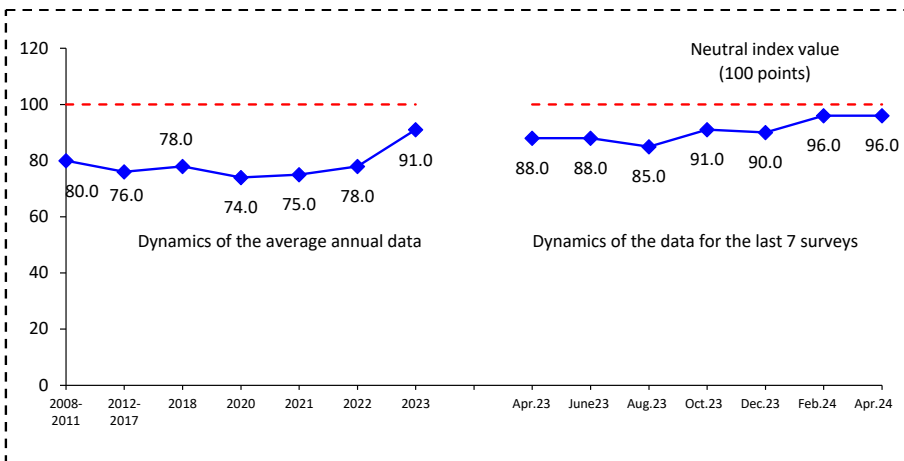
Dynamics (+/-), June 2024 to		
CSI	June 2023	Apr. 2024
Index value, points	+4	0

For reference:

According to the latest data from the all-Russian surveys by Levada-Center* (for the period from February to April 2024), the consumer sentiment index amounted to 96 points.

Tangible positive changes have been observed over the past 12 months (the CSI increased by 8 points, from 88 to 96 points).

Consumer Sentiment Index (CSI, points; Levada-Center* data for Russia)



Dynamics (+/-), April 2024 to		
CSI	June 2023	Apr. 2024
Index value, points	+8	0

The latest data are as of April 2024.

The index is calculated since 2008.

Source: Levada-Center*. Available at: <https://www.levada.ru/indikatory/sotsialno-ekonomicheskie-indikatory/>

* Included in the register of foreign agents.

During the period from April to June 2024, there were no significant changes in the dynamics of the share of positive assessments of social mood in 10 of the 14 main socio-demographic groups. The proportion of those who characterize their daily emotional state as positive has increased among women (by 5 percentage points, from 67 to 72%), persons with higher and incomplete higher education (by 6 percentage points, from 70 to 76%). There is a deterioration in mood in the group of people under the age of 30 (by 6 percentage points, from 78 to 72%), as well as in men (by 4 percentage points, from 68 to 64%).

In the period from June 2023 to June 2024, the share of positive assessments of social mood increased in 8 of the 14 main socio-demographic groups, especially among women (by 7 percentage points, from 65 to 72%), residents over 55 years of age (by 7 percentage points, from 55 to 63%), people with higher and incomplete higher education (by 8 percentage points, from 68 to 76%), and among the population of Vologda (by 7 percentage points, from 58 to 65%). There are no noticeable changes in the other groups.

Social mood in different social groups (response: "Wonderful mood, normal, stable condition", % of respondents; VolRC RAS data)

Population group	Dynamics of the average annual data										Dynamics of the data for the last 7 surveys							Dynamics (+/-), June 2024 to	
	2000	2007	2011	2012	2018	2020	2021	2022	2023	June 2023	Aug. 2023	Oct. 2023	Dec. 2023	Feb. 2024	Apr. 2024	June 2024	June 2023	Apr. 2024	
Sex																			
Men	50.1	65.9	64.5	69.1	72.8	60.8	65.7	66.8	65.5	63.4	65.4	66.9	69.6	66.5	67.7	63.5	0	-4	
Women	43.3	61.7	62.0	65.8	69.8	61.2	67.4	67.9	65.7	64.7	65.3	69.4	68.9	66.5	67.1	72.1	+7	+5	
Age																			
Under 30	59.1	71.3	70.0	72.3	80.0	67.6	73.5	77.6	75.0	72.9	76.2	79.4	78.0	75.1	77.5	71.8	-1	-6	
30–55	44.2	64.8	62.5	67.9	72.6	61.8	69.5	69.4	68.8	68.6	69.2	71.1	72.3	69.9	70.0	71.8	+3	+2	
Over 55	37.4	54.8	58.3	62.1	65.2	57.4	60.5	61.1	58.2	55.4	56.3	60.5	62.0	59.2	60.7	62.7	+7	+2	
Education																			
Secondary and incomplete secondary	41.7	58.4	57.4	57.2	64.8	56.1	62.1	64.6	62.0	61.6	63.2	64.4	65.5	63.9	64.7	65.5	+4	+1	
Secondary vocational	46.4	64.6	63.6	66.7	72.2	63.5	66.7	68.3	66.1	63.7	65.1	70.1	69.1	66.0	67.9	65.2	+2	-3	
Higher and incomplete higher	53.3	68.6	68.3	77.0	76.8	63.3	71.5	69.5	68.8	68.2	67.4	70.0	72.8	69.4	69.8	76.0	+8	+6	
Income group																			
Bottom 20%	28.4	51.6	45.3	51.5	57.3	43.4	54.6	57.0	50.1	50.4	49.6	52.5	54.2	52.2	53.0	51.3	+1	-2	
Middle 60%	45.5	62.9	65.3	68.7	71.9	62.6	67.3	68.1	67.4	65.7	67.9	71.0	73.1	66.9	68.5	70.0	+4	+1	
Top 20%	64.6	74.9	75.3	81.1	82.9	75.6	79.9	78.3	73.9	72.1	70.3	73.2	75.9	74.4	77.5	78.5	+6	+1	
Territory																			
Vologda	49.2	63.1	67.1	73.6	71.0	60.9	60.3	59.8	59.6	57.8	60.8	63.8	64.8	62.5	64.2	65.2	+7	+1	
Cherepovets	50.8	68.1	71.2	76.2	75.8	60.4	71.0	71.2	68.1	67.9	66.4	69.4	70.6	67.2	68.2	69.4	+1	+1	
Districts	42.2	61.6	57.1	59.8	68.7	61.4	67.8	69.5	67.7	65.6	67.3	70.2	70.9	68.5	68.8	69.4	+4	+1	
Region	46.2	63.6	63.1	67.3	71.2	61.0	66.6	67.4	65.6	64.1	65.3	68.3	69.2	66.5	67.4	68.3	+4	+1	
																	8/6	2/10	
																	/0	/2	

RESUME

The latest round of public opinion monitoring took place in May – June 2024 against the background of the formation of a new political cycle in Russia. Key internal events of this period are as follows: inauguration of Vladimir Putin as President of the Russian Federation (May 7, 2024); appointment of a new composition of the Government of the Russian Federation and the Presidential Administration of the Russian Federation (June 14, 2024); definition of medium-term indicators of national development for the period up to 2036 (“May decrees” of the President of the Russian Federation, dated May 7, 2024).

Given the importance of these events for the development of the country, regions, and citizens’ personal well-being, we should note that the survey results show the stability of public assessments of key indicators of public administration effectiveness.

In June 2024, the President’s approval rating remained consistently high, amounting to 67–68%. **The share of positive assessments has increased by 6 percentage points over the past year, which indicates a steady trend of increasing support for the head of state among the region’s population.**

The positive assessments of the region’s population regarding the work of the head of state are confirmed by all-Russian data. On May 6, 2024, on the eve of the inauguration, VCIOM presented the results of a monitoring survey on public perception of Vladimir Putin’s activities as President of the Russian Federation. **The survey results show that over the past two years, the confidence of Russians in Vladimir Putin’s ability to ensure stability and development in Russia has increased by 13 p.p. (from 67% in January 2022 to 80% in May 2024). The image of Vladimir Putin as a leader who has a well-thought-out economic program and is better able than other politicians to govern the country has been strengthened⁵.**

The party and political preferences of the region’s residents remain stable, the United Russia Party is in the lead (44%). **In the period from June 2023 to June 2024, the level of support for this party increased by 4 percentage points, while the support for other parties has not changed (2–8%).**

There are no negative shifts in the dynamics of assessing the standard of living (the share of “the poor and extremely poor” remained at 40%, people of “average income” – at 46–48%) and prospects for its development (consumer sentiment index was 87 points). **There is an improvement in the indicator compared to the previous year, when the index was 83 points, which indicates positive changes in the material well-being of the region’s population and expectations for the future.**

Estimates of social mood remain consistently high (the proportion of those who experience predominantly positive emotions was 68%; the proportion of people who believe that “everything is not so bad and life is livable; life is hard, but we can endure it” was 76%).

However, we should note that **Over the past two months, the share of positive assessments of social mood has decreased in some socio-demographic groups, primarily in the group of people under the age of 30 (by 6 percentage points, from 78 to 72%), as well as among men (by 4 percentage points, from 68 to 64%). The changes in these groups cannot be interpreted outside the context of the ongoing special military operation, since men under the age of 30 belong to the category of military age, which causes them to have alarming expectations regarding mobilization to the war zone of the SMO. Nevertheless, Russian**

⁵ President Putin: Assessments and attitudes of citizens. VCIOM. May 6, 2024. Available at: <https://wciom.ru/analytical-reviews/analiticheskii-obzor/prezident-putin-ocenki-i-otnoshenie-grazhdan>

President Vladimir Putin said during the plenary session of the Saint Petersburg International Economic Forum (SPIEF) that there is no need to mobilize in Russia and mobilization is not planned⁶.

In addition, the start of the admission campaign to universities and the exam period could affect the social well-being of young people, leading to a decrease in the proportion of positive assessments, causing young people to feel insecure and anxious.

In general, indicators of social mood remain consistently positive for socio-demographic groups, which is caused, among other things, by the period of vacation, when you can take your mind off work and study, devote time to rest, favorite activities and loved ones. However, psychological well-being in the context of groups requires a further monitoring of the situation, as well as closer attention from the authorities in order to prevent the development of negative trends.

The monitoring data provided indicate that the society retains a high potential for stability, support for the head of state and his chosen external and internal political course. Despite the alarming foreign policy situation associated with the pressure of NATO countries, the authorities manage to maintain the trend toward economic development in general and the preservation of the welfare of the population in particular. The adopted “May decrees” of the President of the Russian Federation (May 7, 2024) indicate that the state does not forget about the current state of affairs, continuing to actively make managerial decisions to improve the quality of life of citizens, as well as to strengthen “state, cultural, value and economic sovereignty”⁷.

Prepared by K.E. Kosygina and I.M. Bakhvalova

⁶ Putin explained why Russia does not need a new mobilization. Available at: <https://www.rbc.ru/politics/07/06/2024/6663238e9a79474c3c7a8890>

⁷ Decree on the national development goals of the Russian Federation for the period up to 2030 and for the future up to 2036. Available at: <http://kremlin.ru/events/president/news/73986>