

MONITORING OF PUBLIC OPINION

DOI: 10.15838/esc.2024.6.96.16

Public Opinion Monitoring of the State of the Russian Society

As in the previous issues, we publish the results of the monitoring of public opinion concerning the state of the Russian society. The monitoring is conducted by VoIRC RAS in the Vologda Region¹.

The following tables and graphs show the dynamics of several parameters of social well-being and socio-political sentiment of the region's population according to the results of the latest round of the monitoring (December 2024) and for the period from December 2023 to December 2024 (the last seven surveys, that is, almost a year).

We compare the results of the surveys with the average annual data for 2000 (the first year of Vladimir Putin's first presidential term), 2007 (the last year of Vladimir Putin's second presidential term, when the assessment of the President's work was the highest), 2011 (the last year of Dmitry Medvedev's presidency), and 2012 (the first year of Vladimir Putin's third presidential term).

We also present the annual dynamics of the data for 2020–2024².

In December 2024 the President's approval rating remained at the level of October 2024 and amounted to 67%; the proportion of negative assessments was 19%³.

Over the past 12 months (from December 2023 to December 2024) the President's approval rating increased from 62 to 67% (by 5 percentage points); in general, in 2024, compared with the average annual data of 2023, there was also an increase in support for the work of the head of state (by 6 percentage points, from 61 to 67%).

¹ The surveys are held six times a year in the cities of Vologda and Cherepovets, in Babayevsky, Velikoustyugsky, Vozhegodsky, Gryazovetsky, Tarnogsky Kirillovsky, Nikolsky municipal okrugs, and in Sheksninsky Municipal District. The method of the survey is a questionnaire poll by place of residence of respondents. The volume of a sample population is 1,500 people 18 years of age and older. The sample is purposeful and quoted. The representativeness of the sample is ensured by the observance of the proportions between the urban and rural population, the proportions between the inhabitants of settlements of various types (rural communities, small and medium-sized cities), age and sex structure of the Region's adult population. Sampling error does not exceed 3%.

More information on the results of VoIRC RAS surveys is available at <http://www.vscs.ac.ru/>.

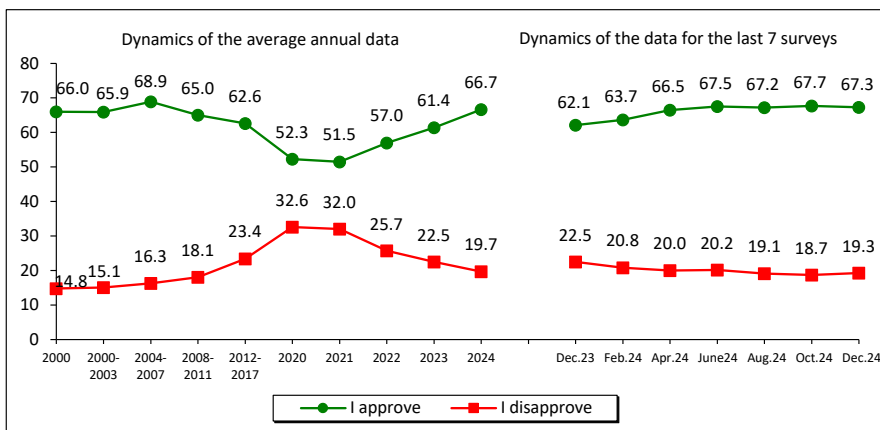
² In 2020, four rounds of the monitoring were conducted. Surveys in April and June 2020 were not conducted due to quarantine restrictions during the spread of COVID-19.

³ Here and elsewhere, in all tables and in the text, positive changes are highlighted in green, negative changes are highlighted in red, and no changes – in blue. Due to the fact that the changes of +/- 3 p.p. fall within the limits of sampling error, they are considered insignificant and are marked in blue.

How would you assess the current work of...? (% of respondents)

Response	Dynamics of the average annual data										Dynamics of the data for the last 7 surveys							Dynamics (+/-), Dec. 2024 to	
	2000	2007	2011	2012	2020	2021	2022	2023	2024	Dec. 2023	Feb. 2024	Apr. 2024	June 2024	Aug. 2024	Oct. 2024	Dec. 2024	Dec. 2023	Oct. 2024	
RF President																			
I approve	66.0	75.3	58.7	51.7	52.3	51.5	57.0	61.4	66.7	62.1	63.7	66.5	67.5	67.2	67.7	67.3	+5	0	
I disapprove	14.8	11.5	25.5	32.6	32.6	32.0	25.7	22.5	19.7	22.5	20.8	20.0	20.2	19.1	18.7	19.3	-3	+1	
Chairman of the RF Government																			
I approve	-	-	59.3	49.6	38.7	39.9	45.4	50.1	54.1	51.9	52.7	53.7	53.5	55.3	53.7	55.6	+4	+2	
I disapprove	-	-	24.7	33.3	40.4	37.6	32.0	27.6	24.8	27.9	26.2	24.3	23.4	24.1	25.5	25.3	-3	0	
Governor																			
I approve	56.1	55.8	45.7	41.9	35.0	36.7	40.9	48.1	51.7	49.1	50.8	51.7	51.6	53.4	51.9	50.8	+2	-1	
I disapprove	19.3	22.2	30.5	33.3	42.5	40.5	35.8	30.9	28.4	29.9	27.5	30.1	28.0	26.7	28.0	29.8	0	+2	
Wording of the question: "How would you assess the current work of ...?"																			

How would you assess the way that the RF President is handling his job? (% of respondents, VolRC RAS data)*



Dynamics (+/-), Dec. 2024 to		
Response	Dec. 2023	Oct. 2024
I approve	+5	0
I disapprove	-3	+1

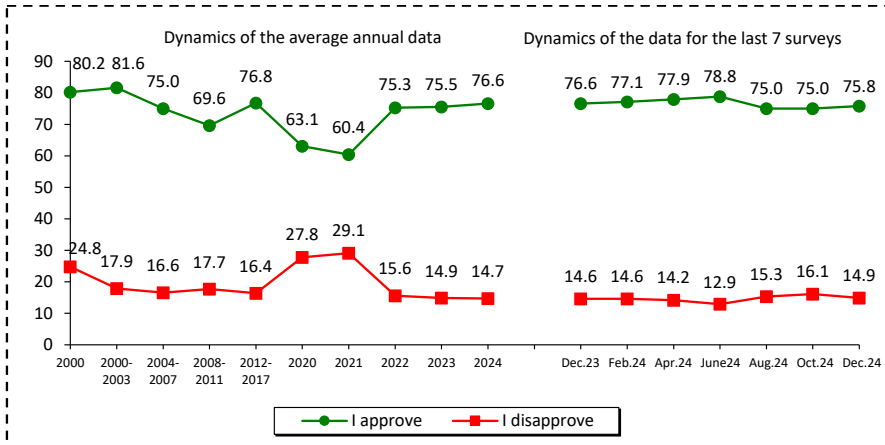
* Here and elsewhere, all graphs show the average annual data for 2000, 2020, 2021, 2022, 2023, 2024, as well as the average annual data for the periods 2000–2003, 2004–2007, 2008–2011, 2012–2017 that correspond to presidential terms.

For reference:

According to VCIOM, the President's approval rating in October – first half of December 2024 was 75–76%, the proportion of negative assessments was 15–16%.

The President's approval rating in December 2024 remained the same as in October 2024 (75–76%), while on average in 2024, Russians' support for the work of the head of state remained at a high level and is comparable to the average annual data for 2023.

Do you approve or disapprove of the way that the RF President is handling his job?
(% of respondents; VCIOM data)



Dynamics (+/-), Dec. 2024 to		
Response	Dec. 2023	Oct. 2024
I approve	-1	+1
I disapprove	0	-1

Wording of the question: “In general, do you approve or disapprove of the way that the Russian President is handling his job?”
Data as of December 2024 reflect an average for three surveys: as of December 1, 2024, December 8, 2024 and December 15, 2024.

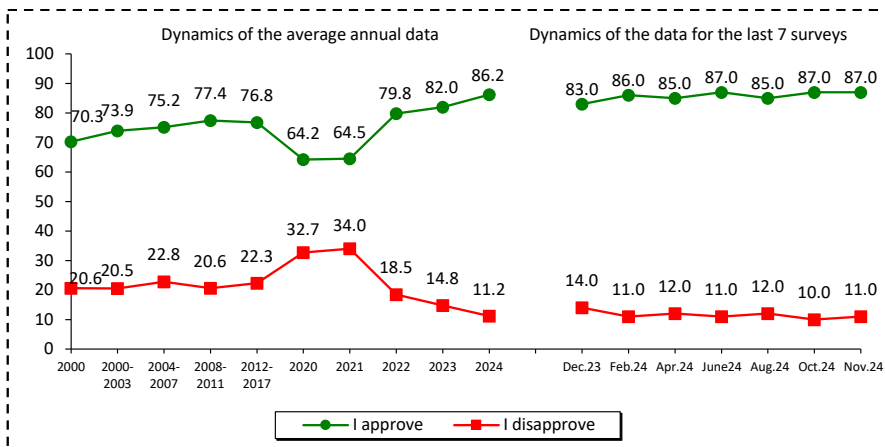
Source: VCIOM. Available at: <https://wciom.ru/>

According to Levada-Center*, the share of positive assessments of the President’s work in October – November 2024 amounted to 87%; the proportion of negative judgments was 10–11%. The estimates have not changed in the last two months.

However, from December 2023 to November 2024, the proportion of positive opinions about the RF President’s work increased by 4 percentage points, from 83 to 87%.

According to the annual average, approval rating of the head of state has increased from 82% in 2023 to 86% in 2024 (by 4 percentage points).

In general, do you approve or disapprove of the way that Vladimir Putin is handling his job as President of Russia? (% of respondents; Levada-Center* data)



Dynamics (+/-), Nov. 2024 to		
Response	Dec. 2023	Oct. 2024
I approve	+4	0
I disapprove	-3	+1

Source: Levada-Center*. Available at: <https://www.levada.ru/>

Wording of the question: “In general, do you approve or disapprove of the way that Vladimir Putin is handling his job as President of Russia?”

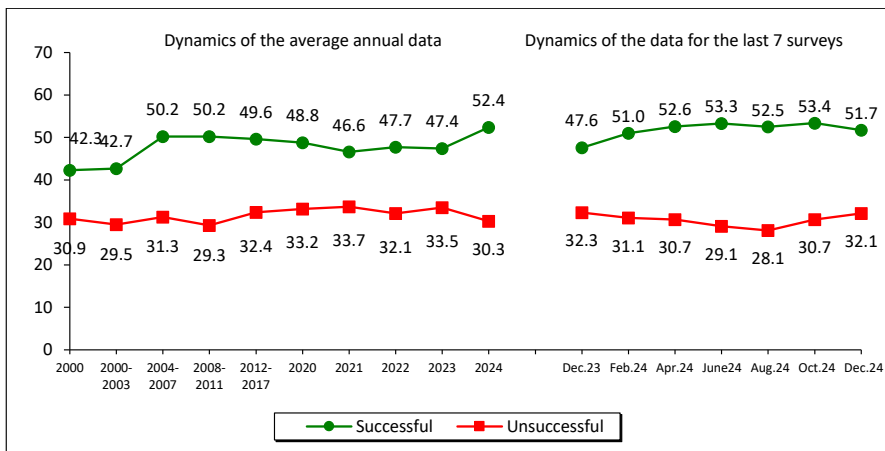
* Included in the register of foreign agents.

In October – December 2024 the share of those who consider the President’s actions to strengthen Russia’s international positions successful amounted to 52–53%. The proportion of those who hold the opposite point of view is considerably lower (32%).

There have been positive changes in the dynamics of population assessments over the past 12 months and on average for 2023–2024: from December 2023 to December 2024, an increase from 48 to 52% (by 4 percentage points), according to the annual average data, an increase in approving judgments regarding the activities of the head of state to strengthen international positions from 47% in 2023 to 52% in 2024 (by 5 percentage points).

In your opinion, how successful is the RF President in handling challenging issues?
(% of respondents; VoIRC RAS data)

Strengthening Russia’s international position

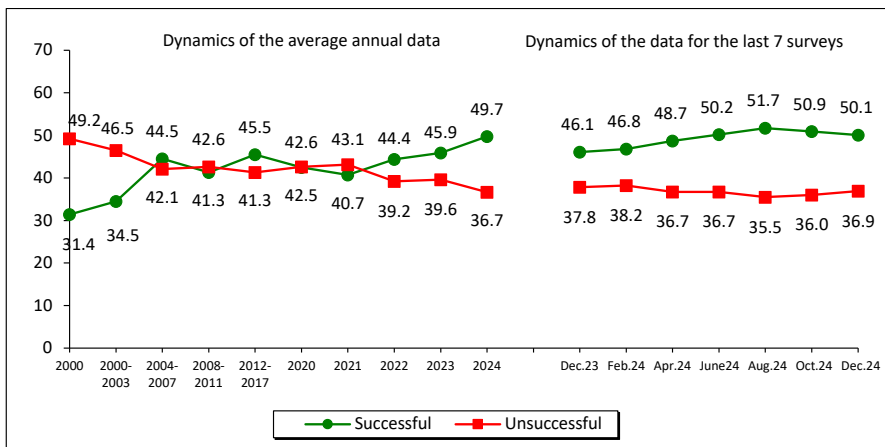


Dynamics (+/-), Dec. 2024 to		
Response	Dec. 2023	Oct. 2024
Successful	+4	-2
Unsuccessful	0	+1

Over the past two months, the opinion of Vologda Region residents about the activities of the head of state to restore order in the country has remained the same: the share of positive judgments was 50–51%, negative ones – 36–37%.

Over the past 12 months, positive changes have been recorded in the dynamics of population assessments: the proportion of residents who believe that the RF President is successfully managing to restore order in the country has increased from 46% to 50% (by 4 percentage points); the share of approving responses has also increased on average in 2023–2024.

Imposing order in the country

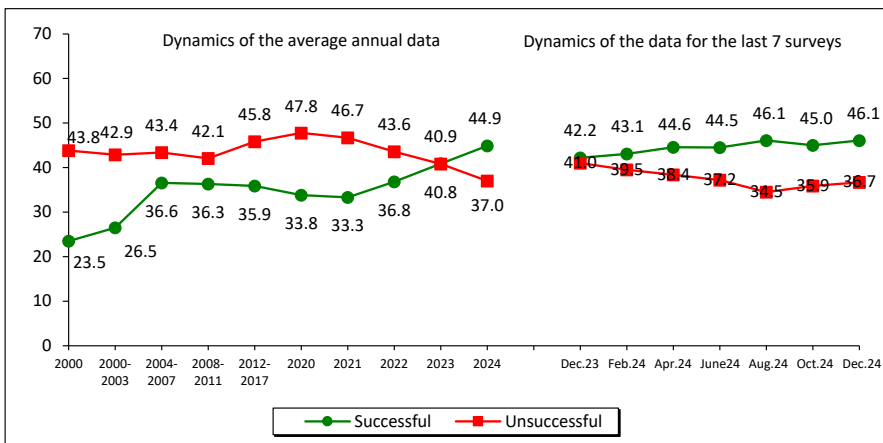


Dynamics (+/-), Dec. 2024 to		
Response	Dec. 2023	Oct. 2024
Successful	+4	-1
Unsuccessful	-1	+1

In October – December 2024, the share of positive assessments of the President’s work to protect democracy and strengthen citizens’ freedoms was 45–46%; the proportion of opposite opinions was 36–37%.

In December 2024, compared with December 2023, the proportion of positive characteristics increased from 42 to 46% (by 4 percentage points). Positive changes are also observed on average in 2024 compared to 2023: an increase in the proportion of positive judgments from 41 to 45% (by 4 percentage points), with a decrease in the share of negative ones from 41 to 37% (by 4 percentage points).

Protecting democracy and strengthening citizens’ freedoms

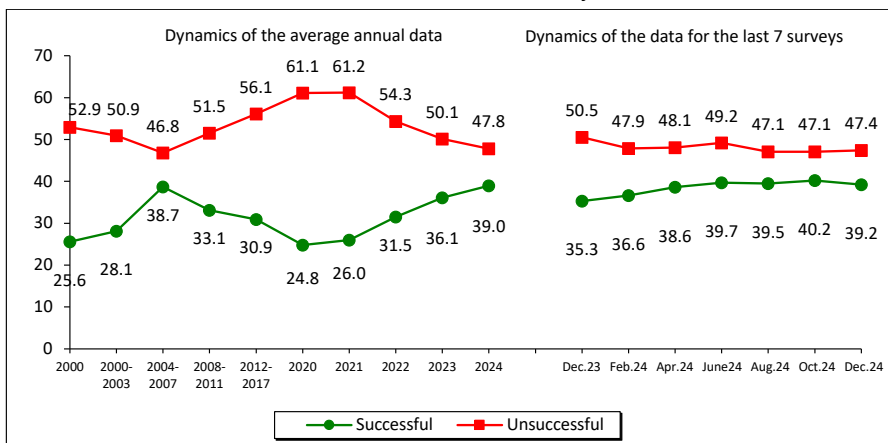


Dynamics (+/-), Dec. 2024 to		
Response	Dec. 2023	Oct. 2024
Successful	+4	+1
Unsuccessful	-4	+1

Over the past two months the share of positive assessments of the way the Russian President handles the problem of economic recovery and growth of citizens’ welfare was 39–40%. The proportion of negative judgments was 47%.

During the period from December 2023 to December 2024, the share of positive public assessments of the head of state’s activities to boost the economy and increase the welfare of citizens increased from 35 to 39% (by 4 percentage points). On average, positive trends were noted in 2024 compared to 2023.

Economic recovery, increase in citizens’ welfare



Dynamics (+/-), Dec. 2024 to		
Response	Dec. 2023	Oct. 2024
Successful	+4	-1
Unsuccessful	-3	0

The political preferences of Vologda Region inhabitants in October – December 2024 remained stable: the share of people whose interests are expressed by the United Russia party was 42%, the Communist Party – 9%, the Liberal Democratic Party – 8–9%, the Just Russia – 4%, the New People – 2%.

The political preferences of the region’s residents did not change in 12 months. **On average, in 2024, compared with 2023, support for the United Russia party increased from 39 to 43% (by 4 percentage points).**

Which party expresses your interests?
(% of respondents; VoIRC RAS data)

Party	Dynamics of the average annual data													Dynamics of the data for the last 7 surveys							Dynamics (+/-), Dec. 2024 to	
	2000	2007	2011	Election to the RF State Duma 2011, fact	2012	2016	Election to the RF State Duma 2016, fact	2020	Election to the RF State Duma 2020, fact	2021	2022	2023	2024	Dec. 2023	Feb. 2024	Apr. 2024	June 2024	Aug. 2024	Oct. 2024	Dec. 2024	Dec. 2023	Oct. 2024
United Russia	18.5	30.2	31.1	33.4	29.1	35.4	38.0	31.5	49.8	31.7	35.2	39.5	42.9	41.7	42.7	44.5	43.7	42.5	41.8	42.3	+1	+1
KPRF	11.5	7.0	10.3	16.8	10.6	8.3	14.2	8.4	18.9	9.3	10.1	9.6	8.9	9.8	9.0	8.5	8.2	9.7	8.7	9.1	-1	0
LDPR	4.8	7.5	7.8	15.4	7.8	10.4	21.9	9.5	7.6	9.9	7.3	7.0	7.1	6.5	6.6	6.5	7.1	6.1	7.5	8.8	+2	+1
Just Russia – Patriots for the Truth	-	7.8	5.6	27.2	6.6	4.2	10.8	4.7	7.5	4.7	4.9	4.4	3.5	3.5	3.6	2.8	2.7	3.5	4.2	4.4	+1	0
New People*	-	-	-	-	-	-	-	-	5.3	2.3	1.5	1.9	2.0	1.9	1.4	1.9	2.3	1.6	2.3	2.3	0	0
Other	0.9	1.8	1.9	-	2.1	0.3	-	0.5	-	0.2	0.3	0.1	0.2	0.3	0.1	0.1	0.1	0.0	0.3	0.3	0	0
None	29.6	17.8	29.4	-	31.3	29.4	-	34.2	-	33.9	30.6	26.5	25.2	26.6	25.2	24.2	26.1	25.1	24.1	26.3	0	+2
Difficult to answer	20.3	21.2	13.2	-	11.7	12.0	-	11.1	-	10.0	10.1	11.1	10.3	9.9	11.4	11.4	9.8	11.5	11.0	6.5	-3	-5

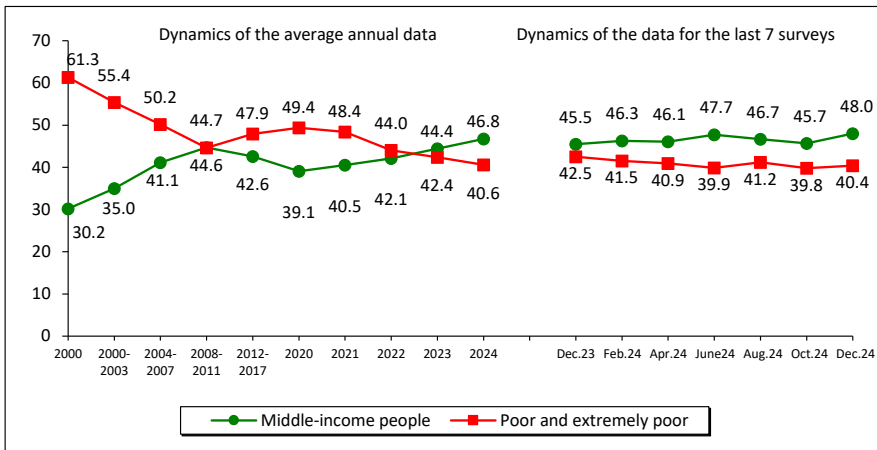
* The New People party was elected to the State Duma of the Russian Federation for the first time following the results of the election held on September 17–19, 2021.

Estimation of social condition (% of respondents; VoIRC RAS data)

Over the past two months, the share of positive assessments of social mood was 70–72%; the share of negative characteristics was 25–26%.

Over the past 12 months, the proportion of people who describe their mood as “normal, fine” remained consistently high and changed slightly, as well as in 2023–2024. according to the annual average data.

Social mood

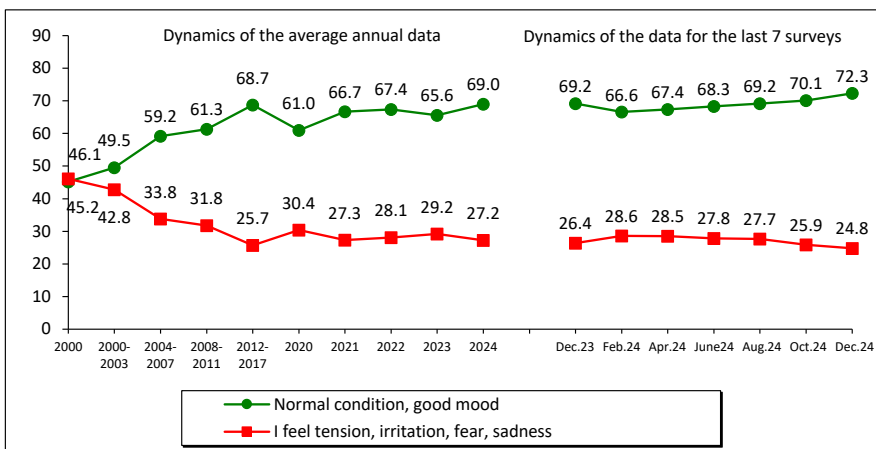


Response	Dec. 2023	Oct. 2024
Normal condition, good mood	+3	+2
I feel tension, irritation, fear, sadness	-2	-1

In October – December 2024, the stock of patience remains at a high level: 81% of Vologda Region residents noted that “everything is not so bad and life is livable”. The proportion of those who believe that “it is impossible to bear such plight” amounted to 12–14%.

Over the past 12 months, the stock of patience increased from 77% to 81% (by 4 percentage points). At the same time, according to the average annual data for 2023 and 2024, the estimates remained stable.

Stock of patience

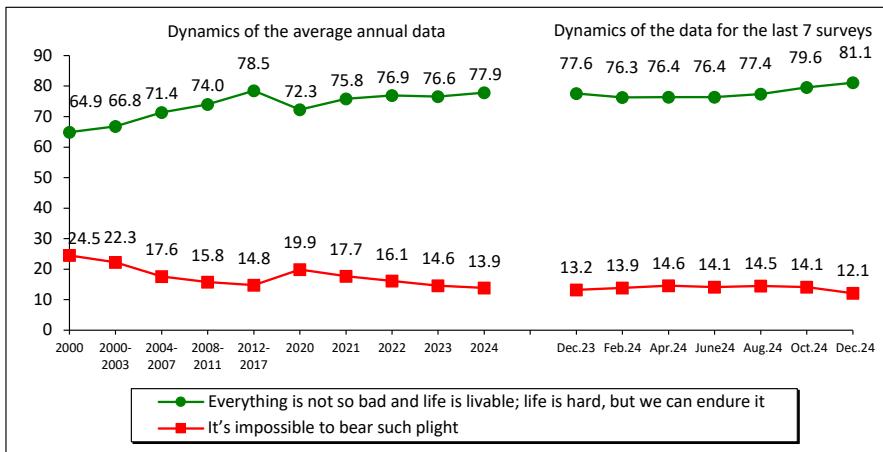


Response	Dec. 2023	Oct. 2024
Everything is not so bad and life is livable; life is hard, but we can endure it	+4	+2
It's impossible to bear such plight	-1	-2

As in October, in December 2024, the share of Vologda Region residents subjectively classifying themselves as “middle-income” people was 46–48%. The proportion of the “poor and extremely poor” did not change as well (40%).

Over the past 12 months, the share of “middle-income” people increased from 45 to 48% (by 3 percentage points). On average, in 2024, compared with 2023, it increased from 44 to 47% (by 3 percentage points).

Social self-identification



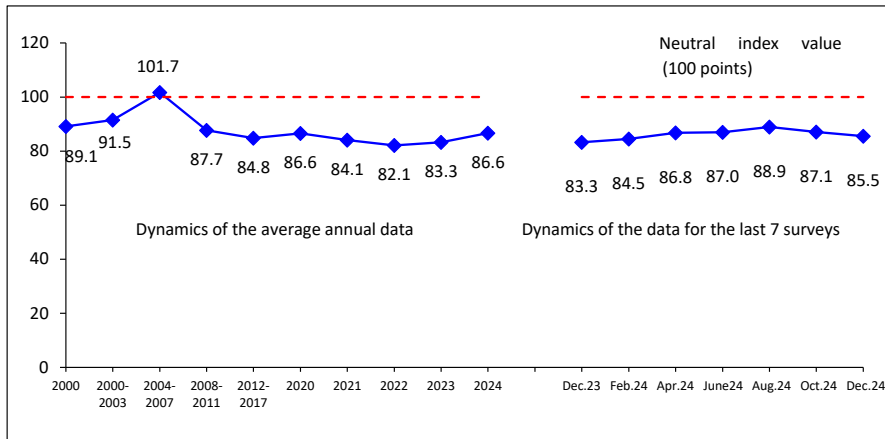
Dynamics (+/-), Dec. 2024 to		
Response	Dec. 2023	Oct. 2024
Middle-income people	+3	+2
Poor and extremely poor	-2	+1

Wording of the question: “What category do you belong to, in your opinion?”

The value of the Consumer Sentiment Index in December 2024 remained at the level of December 2023 with a slight decrease from 87 to 85 points (by 2 percentage points).

In December 2024, the value of the CSI is comparable to the data of December 2023 and amounts to 83–85 points. However, on average for 2023–2024, there are positive changes in the dynamics of the CSI: an increase from 83 to 87 points (by 4 percentage points).

Consumer Sentiment Index (CSI, points; VoIRC RAS data for the Vologda Region)



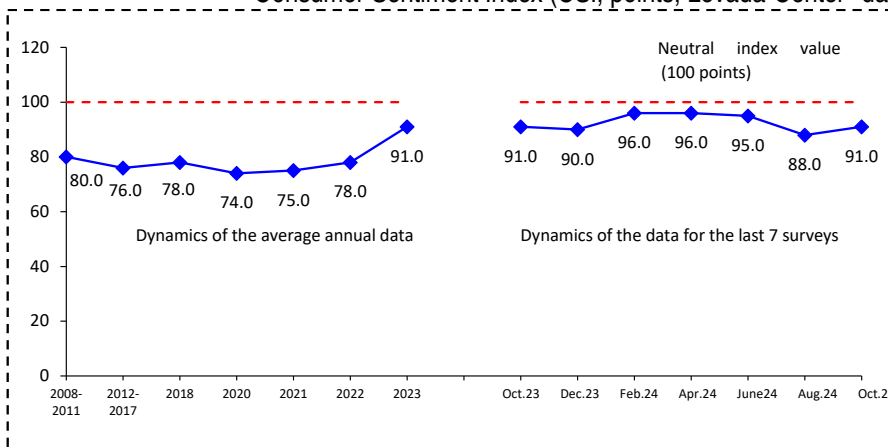
Dynamics (+/-), Dec. 2024 to		
CSI	Dec. 2023	Oct. 2024
Index value, points	+2	-2

For reference:

According to the latest data from the all-Russian surveys by Levada-Center* (for the period from October to December 2024), the Consumer Sentiment Index was 88–91 points.

There were no significant changes in the value of the CSI over the past 12 months. At the same time, on average, significant positive changes are observed over the period from 2023 to 2024: an increase in the CSI by 13 points, from 78 to 91 points.

Consumer Sentiment Index (CSI, points; Levada-Center* data for Russia)



Dynamics (+/-), Oct. 2024 to		
CSI	Oct. 2023	Aug. 2024
Index value, points	0	+3

* The index is calculated since 2008. The latest data are as of October 2024.

Source: Levada-Center*. Available at: <https://www.levada.ru/indikatory/sotsialno-ekonomicheskie-indikatory/>

* Included in the register of foreign agents.

In October – December 2024 there were no significant changes in the dynamics of the share of positive assessments of social mood in most of the main socio-demographic groups. An increase in the proportion of those who positively characterize their daily emotional state is observed among men (from 65 to 70%).

From December 2023 to December 2024, the share of positive assessments of social mood increased in 5 of the 14 main socio-demographic groups, especially among women (by 6 percentage points, from 69 to 75%); people aged over 55 (by 6 percentage points, from 62 to 68%); people with secondary vocational education (by 7 percentage points, from 69 to 76%); 20% of the group of the most affluent (by 5 percentage points, from 76 to 81%), and residents of Vologda (by 5 percentage points, from 65 to 70%). There are no significant changes in other socio-demographic groups.

Social mood in different social groups (response: “Wonderful mood, normal, stable condition”, % of respondents; VolRC RAS data)

Population group	Dynamics of the average annual data									Dynamics of the data for the last 7 surveys							Dynamics (+/-), Dec. 2024 to	
	2000	2007	2011	2012	2020	2021	2022	2023	2024	Dec. 2023	Feb. 2024	Apr. 2024	June 2024	Aug. 2024	Oct. 2024	Dec. 2024	Dec. 2023	Oct. 2024
Sex																		
Men	50.1	65.9	64.5	69.1	60.8	65.7	66.8	65.5	66.5	69.6	66.5	67.7	63.5	67.1	65.2	69.2	0	+4
Women	43.3	61.7	62.0	65.8	61.2	67.4	67.9	65.7	70.9	68.9	66.5	67.1	72.1	70.9	74.0	74.7	+6	+1
Age																		
Under 30	59.1	71.3	70.0	72.3	67.6	73.5	77.6	75.0	76.6	78.0	75.1	77.5	71.8	76.1	78.0	81.3	+3	+3
30–55	44.2	64.8	62.5	67.9	61.8	69.5	69.4	68.8	71.3	72.3	69.9	70.0	71.8	72.8	69.8	73.2	+1	+3
Over 55	37.4	54.8	58.3	62.1	57.4	60.5	61.1	58.2	63.3	62.0	59.2	60.7	62.7	62.1	67.4	67.8	+6	0
Education																		
Secondary and incomplete secondary	41.7	58.4	57.4	57.2	56.1	62.1	64.6	62.0	64.6	65.5	63.9	64.7	65.5	65.3	62.5	65.5	0	+3
Secondary vocational	46.4	64.6	63.6	66.7	63.5	66.7	68.3	66.1	70.3	69.1	66.0	67.9	65.2	70.7	75.2	76.5	+7	+1
Higher and incomplete higher	53.3	68.6	68.3	77.0	63.3	71.5	69.5	68.8	72.3	72.8	69.4	69.8	76.0	72.1	72.3	74.2	+1	+2
Income group																		
Bottom 20%	28.4	51.6	45.3	51.5	43.4	54.6	57.0	50.1	53.5	54.2	52.2	53.0	51.3	53.7	54.8	55.7	+2	+1
Middle 60%	45.5	62.9	65.3	68.7	62.6	67.3	68.1	67.4	70.7	73.1	66.9	68.5	70.0	71.0	73.6	74.2	+1	+1
Top 20%	64.6	74.9	75.3	81.1	75.6	79.9	78.3	73.9	77.6	75.9	74.4	77.5	78.5	75.9	78.4	80.6	+5	+2
Territory																		
Vologda	49.2	63.1	67.1	73.6	60.9	60.3	59.8	59.6	66.0	64.8	62.5	64.2	65.2	66.4	67.9	69.6	+5	+2
Cherepovets	50.8	68.1	71.2	76.2	60.4	71.0	71.2	68.1	69.8	70.6	67.2	68.2	69.4	70.2	70.7	73.0	+2	+2
Districts	42.2	61.6	57.1	59.8	61.4	67.8	69.5	67.7	70.2	70.9	68.5	68.8	69.4	70.3	71.0	73.4	+3	+2
Region	46.2	63.6	63.1	67.3	61.0	66.6	67.4	65.6	69.0	69.2	66.5	67.4	68.3	69.2	70.1	72.3	+3	+2

SUMMING UP

The results of six rounds of public opinion monitoring conducted in 2024 allow us to summarize the results of the year and assess how Vologda Region inhabitants assess key events that took place in the country and the region.

The external factors determining changes in the condition of society, of course, remain the ongoing special military operation and the resulting escalation of threats to Russia's national security from NATO countries. In the context of comprehensive threats to national sovereignty (including threats of an informational and cultural-value nature), the country's leadership has actively taken and is taking managerial decisions aimed at strengthening the economic, political, and cultural sovereignty of the Russian state.

The main internal event was the election of the President of the Russian Federation. More than 87% voted for Vladimir Putin; turnout was 77%; trust in the results of the election was 83% – all this set a historical record for modern Russia⁴. The support for Vladimir Putin by the majority of voters determined the country's political course for the coming years and demonstrated the consolidation of society and government in difficult modern realities.

Despite external pressure, the state has maintained all social obligations; moreover, new development goals have been set⁵. In 2024, a number of significant social initiatives were implemented within the framework of the Year of the Family announced by the president: the amount of maternity capital was increased, new benefits and allowances were introduced, as well as special titles for large families (“Heroine Mother”, “Parental Glory”). In his Address to the Federal Assembly of the Russian Federation, the Russian President announced the launch of five new national projects⁶. In addition, as Vladimir Putin noted during the “direct line” on December 19, 2024, “in two years, the Russian economy has grown by about 8%, and the situation remains stable”⁷.

In the Vologda Region, in September 2024, gubernatorial election was held, according to the results of which Georgy Filimonov (United Russia) won, gaining 273,380 votes (62.3%).

Public opinion monitoring data indicate that the noted events and changes in some sense “compensated” for public concern about external threats coming from the NATO countries. In our opinion, this is largely why the trends in public sentiment are mainly positive for 2024 compared to the average annual data for 2023.

1. The share of positive assessments of the work of the head of state increased by 6 percentage points, from 61 to 67%, which indicates that the majority of the population understands and supports the political course implemented by the President.

2. There has been an increase in approval of the head of state's activities to strengthen international positions by 5 percentage points, from 47 to 52%; to restore order in the country by 4 percentage points, from 46 to 50%; to protect democracy and strengthen citizens' freedoms by 4 percentage points, from 41 to 45%; to raise economic growth and the growth of the welfare of citizens by 3 percentage points, from 36 to 39%.

⁴ EISI experts named the main political events of 2024. Available at: <https://rg.ru/2024/12/18/eksperty-eisi-nazvali-glavnye-politicheskie-sobytiia-2024-goda.html>

⁵ On the national development goals of the Russian Federation for the period up to 2030 and for the future up to 2036: Presidential Decree 309, dated May 7, 2024.

⁶ Putin: In two years, the Russian economy has grown by about 8 percent. Available at: <https://rg.ru/2024/12/19/putin-zadva-goda-rost-ekonomiki-rossii-sostavil-okolo-8-procentov.html>

⁷ Putin announced the launch of new national projects in Russia. Available at: <https://iz.ru/1657779/2024-02-29/putin-soobshchil-o-zapuske-novykh-natsionalnykh-proektov-v-rossii>

3. The proportion of people who believe that their interests are reflected by the party in power (United Russia) has increased by 4 percentage points (from 39 to 43%).

4. The background of psychological well-being of the population remains stable. The share of Vologda Region residents who describe their daily emotional state as “normal, fine” is 66–69%, with positive ratings increasing by 3 percentage points in 2024 compared to 2023.

5. The stock of patience has increased over the past 12 months from 77 to 81% (by 4 percentage points). At the same time, according to the average annual data for 2023 and 2024, the estimates remained stable.

6. Over the past year, there were no significant changes in the dynamics of assessments by residents of the region of their financial situation and the economic situation in the country. The share of those who consider themselves “poor and extremely poor” has been gradually decreasing since 2020 (from 2020 to 2024 – by 8 percentage points, from 49 to 41%); the proportion of “middle-income” people has also increased by 8 percentage points over the past 5 years, from 39 to 47%.

7. On average, in 2023–2024, we observe positive changes in the dynamics of the CSI, an increase from 83 to 87 points (by 4 percentage points).

Thus, the results of the public opinion monitoring in the Vologda Region in 2024 confirm the steady dynamics of positive sentiments among the population. Public support for the president and the country’s political course continues to grow, which indicates the consolidation of society in the face of external challenges and internal changes.

In a sense, this correlates with the recent words of the head of state that “Russia should not return to the path it followed before 2022”⁸. However, we should bear in mind that the new stage of history, which began for our country almost three years ago, is still very far from its completion. The new Russia is still being built, and the international political situation around our country is still full of dangers and threats that can, among other things, have a significant negative impact on the nature of public sentiment.

The results of the next round of the VolRC RAS monitoring will show in which direction changes in public opinion of the residents of the region will develop in the near future.

Prepared by K.E. Kosygina and I.M. Bakhvalova

⁸ A direct quote from the President of the Russian Federation, delivered at the plenary session of the Valdai International Discussion Club on November 7, 2024 in Sochi: “I would not like Russia to return to the path it followed before 2022 ... it was a path that was associated with such a hidden, veiled intervention against our country”.